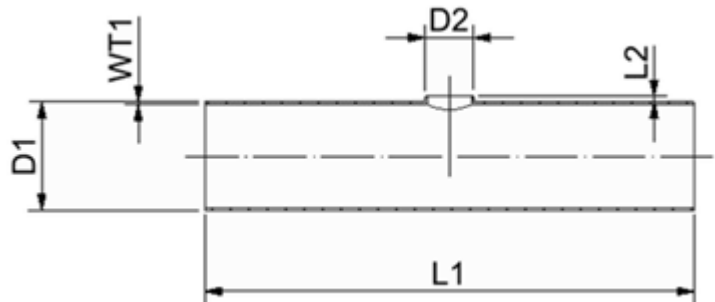


Main pipe w. one collar, L=1200mm,

1. Product application

Main pipe with drawn collar can be used to create a branch of the preinsulated pipeline

2. Product parameters



D1 casing pipe outside diam [mm]	minimum D2 round collar diameter [mm]	maximum D2 round hole diameter [mm]	L1 [mm]	D2 collar shape	WT D1* [mm]
90	90	90	1200 ±10	round	4,0
110	90	110	1200 ±10	round	4,0
125	90	125	1200 ±10	round	4,1
140	90	140	1200 ±10	round	4,5
160	90	160	1200 ±10	round	5,0
180	90	180	1200 ±10	round	5,0
200	90	200	1200 ±10	round	5,0
225	90	225	1200 ±10	round	5,5
250	90	250	1200 ±10	round	6,1
280	90	280	1200 ±10	round	6,9
315	90	315	1200 ±10	round	7,7

*WT concern raw PE pipe material thicknesses before expansion / downsizing

- ❖ Belmaflex main pipes can be also supplied with more collars.
- ❖ On customer request collars can be also made in elliptical shape
- ❖ In case of a need for a specific product please contact our sales department

3. Material

High density polyethylene (material classification PE100)

4. Marking

White identification label placed in the middle of the product with information about the product parameters and production date.

5. Storage

In case of a long term storage, weldable PE products should be protected against direct exposition to sunlight as well as changeable temperature and weather conditions. The products should be protected against mechanical damages.