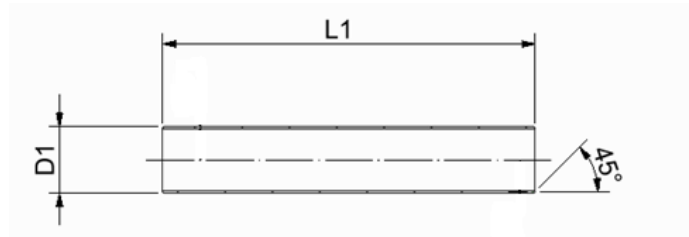
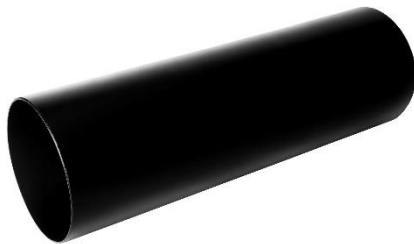


Casing joint, shrinkable, L=1400mm, packed in foil, Extra wall thickness

1. Product application

Belmaflex casing joints, shrinkable with extra wall thickness are designed to create a perfect and strong joint in the connection areas of the two preinsulated pipes. The increased wall thickness makes that the products are suitable to be used for electrical welding or for extrusion welding as repair joints.

2. Product parameters



casing pipe outside diam [mm]	item no	L1 [mm]	min inside diameter before shrinking [mm]	WT* [mm]
90	1909040014015	1400 ±10	105	4,0
90	1909054014019	1400 ±10	105	5,4**
110	1911040014015	1400 ±10	125	4,0
110	1911066014019	1400 ±10	125	6,6**
125	1912541014015	1400 ±10	140	4,1
125	1912548014019	1400 ±10	140	4,8**
140	1914045014015	1400 ±10	155	4,5
140	1914054014019	1400 ±10	155	5,4**
160	1916050014015	1400 ±10	176	5,0
180	1918050014015	1400 ±10	197	5,0
200	1920050014015	1400 ±10	217	5,0
225	1922555014015	1400 ±10	243	5,5
250	1925061014015	1400 ±10	269	6,1
280	1928069014015	1400 ±10	299	6,9
315	1931577014015	1400 ±10	336	7,7
355	1935577014015	1400 ±10	378	7,7
400	1940080014015	1400 ±10	420	8,0
450	1945090014015	1400 ±10	470	9,0
500	1950078014010	1400 ±10	520	7,8
500	1950010014015	1400 ±10	520	10,0
560	1956011014015	1400 ±10	581	11,0
630	1963012014015	1400 ±10	659	12,0
710	1971013014015	1400 ±10	738	13,0

*WT concern raw PE pipe material thicknesses before expansion / downsizing

**thicker wall thickness version for easier extrusion welding process

- ❖ **Belmaflex Casing Joints, shrinkable with extra wall thickness are also supplied in standard lengths, 700 and 1000mm or can be supplied in any other lengths on customer request**
- ❖ **In case of a need for a specific product please contact our sales department**

Casing joint, shrinkable, L=1400mm, packed in foil, Extra wall thickness

3. Material

High density polyethylene (material classification PE100)

4. Marking

White identification label placed in the middle of the joint with information about the product parameters and production date.

5. Packing

According to the agreement with the customer products can be additionally supplied with below accessories:

- mastic (integrated or loose)
- shrink collars
- welding and venting plugs

6. Transport

General transport conditions apply as follow:

- Transport on a pallets
- The pallet should be wrapped with protective plastic foil in order to protect against dust, dirt and damage
- Protect the cargo against sunlight,
- Protect the cargo against rainfall/snowfall
- Pallets should be protected against falling and movement during transportation

7. Storage

General storage conditions apply as follow:

- store indoors or under cover,
- store in vertical position on a flat surface,
- protect against the possibility of damaging of products protective plastic foil
- protect from sunlight
- protect against rainfall/snowfall.
- in order to not activate the shrinking process (from 50°C) store in maximal temperatures not higher than 40 ° C

Belmaflex is not responsible for product damages caused by inappropriate storage.