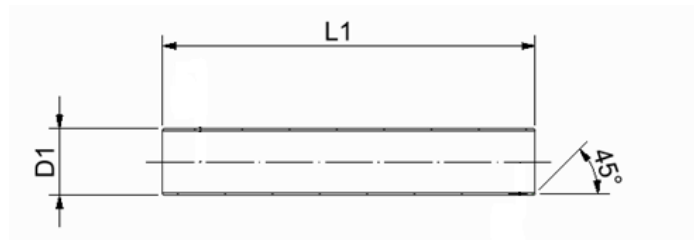
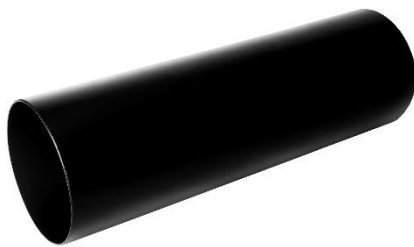


Casing joint, shrinkable, L=1000mm, packed in foil, Extra wall thickness

1. Product application

Belmaflex casing joints, shrinkable with extra wall thickness are designed to create a perfect and strong joint in the connection areas of the two preinsulated pipes. The increased wall thickness makes that the products are suitable to be used for electrical welding or for extrusion welding as repair joints.

2. Product parameters



casing pipe outside diam [mm]	item no	L1 [mm]	min inside diameter before shrinking [mm]	WT* [mm]
90	1909040010015	1000 ±10	105	4,0
90	1909054010019	1000 ±10	105	5,4**
110	1911040010015	1000 ±10	125	4,0
110	1911066010019	1000 ±10	125	6,6**
125	1912541010015	1000 ±10	140	4,1
125	1912548010019	1000 ±10	140	4,8**
140	1914045010015	1000 ±10	155	4,5
140	1914054010019	1000 ±10	155	5,4**
160	1916050010015	1000 ±10	176	5,0
180	1918050010015	1000 ±10	197	5,0
200	1920050010015	1000 ±10	217	5,0
225	192255010015	1000 ±10	243	5,5
250	1925061010015	1000 ±10	269	6,1
280	1928069010015	1000 ±10	299	6,9
315	1931577010015	1000 ±10	336	7,7
355	1935577010015	1000 ±10	378	7,7
400	1940080010015	1000 ±10	420	8,0
450	1945090010015	1000 ±10	470	9,0
500	1950010010015	1000 ±10	520	10,0
560	1956011010015	1000 ±10	581	11,0
630	1963012010015	1000 ±10	659	12,0
710	1971013010015	1000 ±10	738	13,0

*WT concern raw PE pipe material thicknesses before expansion / downsizing

**thicker wall thickness version for easier extrusion welding process

- ❖ **Belmaflex Casing Joints, shrinkable with extra wall thickness are also supplied in standard lengths, 700 and 1400mm or can be supplied in any other lengths on customer request**
- ❖ **In case of a need for a specific product please contact our sales department**

Casing joint, shrinkable, L=1000mm, packed in foil, Extra wall thickness

3. Material

High density polyethylene (material classification PE100)

4. Marking

White identification label placed in the middle of the joint with information about the product parameters and production date.

5. Packing

According to the agreement with the customer products can be additionally supplied with below accessories:

- mastic (integrated or loose)
- shrink collars
- welding and venting plugs

6. Transport

General transport conditions apply as follow:

- Transport on a pallets
- The pallet should be wrapped with protective plastic foil in order to protect against dust, dirt and damage
- Protect the cargo against sunlight,
- Protect the cargo against rainfall/snowfall
- Pallets should be protected against falling and movement during transportation

7. Storage

General storage conditions apply as follow:

- store indoors or under cover,
- store in vertical position on a flat surface,
- protect against the possibility of damaging of products protective plastic foil
- protect from sunlight
- protect against rainfall/snowfall.
- in order to not activate the shrinking process (from 50°C) store in maximal temperatures not higher than 40 ° C

Belmaflex is not responsible for product damages caused by inappropriate storage.