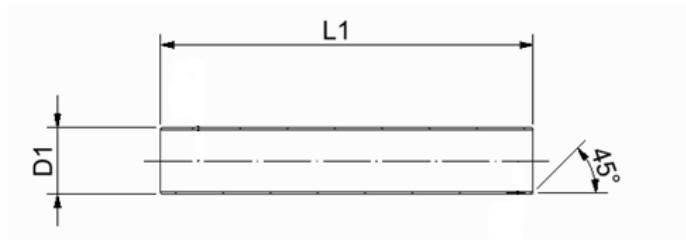
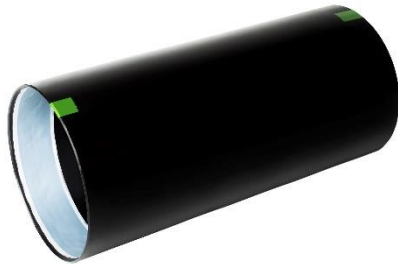


Casing joint, shrinkable, L=700mm, packed in foil, mastic integrated, Standard

1. Product application

Belmaflex casing joints, shrinkable with integrated mastic are designed to create a perfect and strong joint in the connection areas of the two preinsulated pipes.

2. Product parameters



casing pipe outside diam [mm]	item no	L1 [mm]	min inside diameter before shrinking [mm]	WT* [mm]
75	130753007012	700 ±10	89	3
90	130903007012	700 ±10	105	3
110	131103007012	700 ±10	122	3
125	131253007012	700 ±10	140	3
140	131403007012	700 ±10	155	3
160	131603007012	700 ±10	176	3
180	131803007012	700 ±10	197	3
200	132003207012	700 ±10	217	3,2
225	132253407012	700 ±10	243	3,4
250	132503607012	700 ±10	269	3,6
280	132803907012	700 ±10	299	3,9
315	133153907012	700 ±10	336	3,9
355	133554507012	700 ±10	378	4,5
400	134005307012	700 ±10	420	5,3
450	134505207012	700 ±10	470	5,2
500	135005807012	700 ±10	520	5,8
560	135606007012	700 ±10	581	6,0
630	136308807012	700 ±10	659	7,0
710	137109807012	700 ±10	738	9,8
800	138001117012	700 ±10	836	11
900	139001257012	700 ±10	936	12,5
1000	131001297012	700 ±10	1042	12,9
1100	131100307012	700 ±10	1142	13,3
1200	131201387012	700 ±10	1242	13,8

*WT concern raw PE pipe material thicknesses before expansion / downsizing

Casing joint, shrinkable, L=700mm, packed in foil, mastic integrated, Standard

- ❖ Belmaflex Casing Joints are also supplied in standard lengths 500, 600, 1000, 1200, 1400mm or can be supplied in any other lengths on customer request
- ❖ Belmaflex Casing Joints can be also supplied in **EXTRA WALL THICKNESS** version dedicated for electrical or extrusion welding
- ❖ In case of a need for a specific product please contact our sales department

3. Material

High density polyethylene (material classification PE100)

4. Marking

White identification label placed in the middle of the joint with information about the product parameters and production date.

5. Packing

According to the agreement with the customer products can be additionally supplied with welding and venting plugs

6. Transport

General transport conditions apply as follow:

- Transport on a pallets
- The pallet should be wrapped with protective plastic foil in order to protect against dust, dirt and damage
- Protect the cargo against sunlight,
- Protect the cargo against rainfall/snowfall
- Pallets should be protected against falling and movement during transportation

7. Storage

General storage conditions apply as follow:

- store indoors or under cover,
- store in vertical position on a flat surface,
- protect against the possibility of damaging of products protective plastic foil
- protect from sunlight
- protect against rainfall/snowfall.
- in order to not activate the shrinking process (from 50°C) store in maximal temperatures not higher than 40 ° C

Belmaflex is not responsible for product damages caused by inappropriate storage.