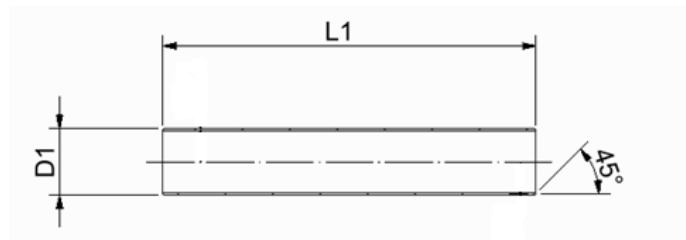
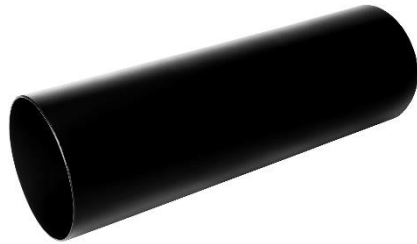


Casing joint, shrinkable, L=1400mm, packed in foil, Standard

1. Product application

Belmaflex casing joints, shrinkable are designed to create a perfect and strong joint in the connection areas of the two preinsulated pipes.

2. Product parameters



casing pipe outside diam [mm]	item no	L1 [mm]	min inside diameter before shrinking [mm]	WT* [mm]
75	1907530014010	1400 ±10	89	3,0
90	1909030014010	1400 ±10	105	3,0
110	1911030014010	1400 ±10	125	3,0
125	1912530014010	1400 ±10	140	3,0
140	1914030014010	1400 ±10	155	3,0
160	1916030014010	1400 ±10	176	3,0
180	1918030014010	1400 ±10	197	3,0
200	1920032014010	1400 ±10	217	3,2
225	1922534014010	1400 ±10	243	3,4
250	1925036014010	1400 ±10	269	3,6
280	1928039014010	1400 ±10	299	3,9
315	1931539014010	1400 ±10	336	3,9
355	1935545014010	1400 ±10	378	4,5
400	1940053014010	1400 ±10	420	5,3
450	1945052014010	1400 ±10	470	5,2
500	1950070014010	1400 ±10	520	7,0
500	1950078014010	1400 ±10	520	7,8
560	1956078014010	1400 ±10	581	7,8
560	1956088014010	1400 ±10	581	8,8
630	1963088014010	1400 ±10	659	8,8
630	1963098014010	1400 ±10	659	9,8
710	1971098014010	1400 ±10	738	9,8
710	1971011114010	1400 ±10	738	11,0
800	1980011114010	1400 ±10	836	11,0
800	1980012514011	1400 ±10	836	12,5
900	1990012514010	1400 ±10	936	12,5
900	1990012914010	1400 ±10	936	12,9

Casing joint, shrinkable, L=1400mm, packed in foil, Standard

1000	1910012914010	1400 ±10	1042	12,9
1000	1910013314011	1400 ±10	1042	13,3

*WT concern raw PE pipe material thicknesses before expansion / downsizing

- ❖ **Belmaflex Casing Joints are also supplied in standard lengths 500, 600, 700, 1000, 1200mm or can be supplied in any other lengths on customer request**
- ❖ **Belmaflex Casing Joints can be also supplied in **EXTRA WALL THICKNESS** version dedicated for electrical or extrusion welding**
- ❖ **In case of a need for a specific product please contact our sales department**

3. Material

High density polyethylene (material classification PE100)

4. Marking

White identification label placed in the middle of the joint with information about the product parameters and production date.

5. Packing

According to the agreement with the customer products can be additionally supplied with below accessories:

- mastic (integrated or loose)
- shrink collars
- welding and venting plugs

6. Transport

General transport conditions apply as follow:

- Transport on a pallets
- The pallet should be wrapped with protective plastic foil in order to protect against dust, dirt and damage
- Protect the cargo against sunlight,
- Protect the cargo against rainfall/snowfall
- Pallets should be protected against falling and movement during transportation

7. Storage

General storage conditions apply as follow:

- store indoors or under cover,
- store in vertical position on a flat surface,
- protect against the possibility of damaging of products protective plastic foil
- protect from sunlight
- protect against rainfall/snowfall.
- in order to not activate the shrinking process (from 50°C) store in maximal temperatures not higher than 40 ° C

Belmaflex is not responsible for product damages caused by inappropriate storage.