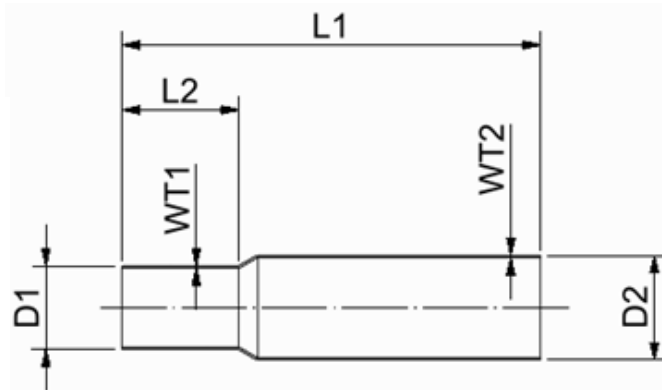


### Reduction, butt welding, L=400mm

#### 1. Product application

Belmaflex reductions, butt welding are dedicated to be used as a part of the preinsulated pipeline system for example as a jacket of the prefabricated preinsulated reducers as well as a jacket of preinsulated ball valves

#### 2. Product parameters



D1	D2	Item number	WT1-WT2 mm*	L1 [mm]	L2 [mm]
090	110	4509011004010	4,0	400 ±10	190±5
090	125	4509012504010	4,0	400 ±10	183±5
090	140	4509014004010	4,0	400 ±10	175±5
110	125	4511012504010	4,0	400 ±10	193±5
110	140	4511014004010	4,0	400 ±10	185±5
110	160	4511016004010	4,1	400 ±10	175±5
110	180	4511018004010	4,5	400 ±10	165±5
125	140	4512514004010	4,1	400 ±10	193±5
125	160	4512516004010	4,1	400 ±10	183±5
125	180	4512518004010	4,5	400 ±10	173±5
140	160	4514016004010	4,5	400 ±10	190±5
140	180	4514018004010	4,5	400 ±10	180±5
140	200	4514020004010	5,0	400 ±10	170±5
160	180	4516018004010	5,0	400 ±10	190±5
160	200	4516020004010	5,0	400 ±10	180±5
160	225	4516022504010	5,0	400 ±10	168±5
180	200	4518020004010	5,0	400 ±10	190±5
180	225	4518022504010	5,0	400 ±10	178±5
200	225	4520022504010	5,0	400 ±10	188±5
200	250	4520025004010	5,0	400 ±10	175±5
200	280	4520028004010	5,5	400 ±10	160±5
200	315	4520031504010	6,1	400 ±10	143±5
225	250	4522525004010	5,5	400 ±10	188±5
225	280	4522528004010	5,5	400 ±10	173±5
225	315	4522531504010	6,1	400 ±10	155±5
250	280	4525028004010	6,1	400 ±10	185±5
250	315	4525031504010	6,1	400 ±10	168±5
250	355	4525035504010	6,9	400 ±10	148±5
280	315	4528031504010	6,9	400 ±10	183±5
280	355	4528035504010	6,9	400 ±10	163±5

### Reduction, butt welding, L=400mm

280	400	4528040004010	7,7	400 ±10	140±5
315	355	4531535504010	7,7	400 ±10	180±5
315	400	4531540004010	7,7	400 ±10	158±5
355	400	4535540004010	7,7	400 ±10	178±5
400	500	4540050004015	8,0	400 ±10	150±5
450	500	4545050004010	9,0	400 ±10	175±5
500	560	4550056004015	10,0	400 ±10	170±5
560	630	4556063004010	11,0	400 ±10	165±5
630	710	4563071004010	12,0	400 ±10	160±5
710	800	4571080004010	11,1	400 ±10	155±5
800	900	4580090004010	12,5	400 ±10	150±5
900	1000	4590010004010	12,9	400 ±10	150±5
1000	1100	4510011004010	13,3	400 ±10	150±5
1100	1200	4511012004010	13,8	400 ±10	150±5

\*concerns raw material wall thickness before expansion / downsizing

- ❖ Belmaflex welding reductions are also supplied in standard lengths 550mm and can be supplied in any other lengths and combination of dimensions on customer request
- ❖ In case of a need for a specific product please contact our sales department

### 3. Material

High density polyethylene (material classification PE100)

### 4. Marking

White identification label placed in the middle of the product with information about the product parameters and production date.

### 5. Storage

In case of a long term storage, weldable PE products should be protected against direct exposition to sunlight as well as changeable temperature and weather conditions. The products should be protected against mechanical damages.