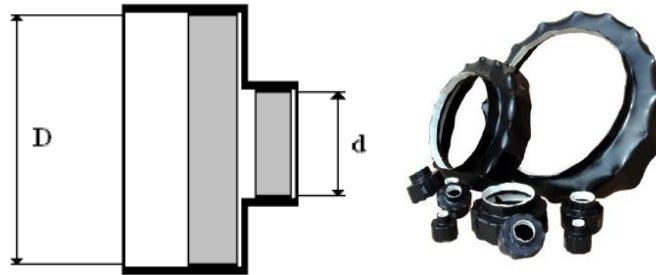


Heat shrinkable end caps ECJ, ECZ

ECJ – Heat shrinkable single end caps

Heat shrinkable ECJ end caps are perfectly suitable for installation on preinsulated pipe ends in order to prevent against water and moist penetration, additionally protecting against gas exchange between air and PUR insulation. Perfect tightness of the product is guaranteed by the integrated butyl-rubber mastic placed on the inner surface of the end caps. ECJ end caps are characterized with very strong mechanical resistance as well as resistance to fungus and other aggressive factors.

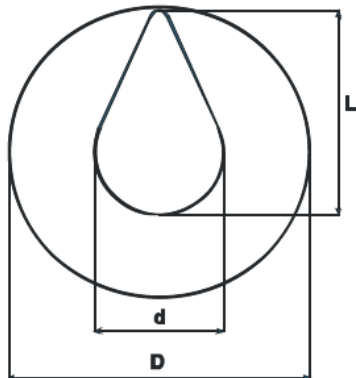


Product name	D (mm)		d (mm)		Application on preinsulated pipes	
	max	min	max	min	isolation standard	isolation plus
ECJ- 90	98	70	40	24	Ø75 / DN 15	
					Ø90 / DN 20	
					Ø90 / DN 25	
ECJ- 110	118	85	53	26	Ø110 / DN 32	Ø110 / DN25
					Ø110 / DN 40	
ECJ- 125	133	95	64	42	Ø110 / DN 40	Ø110 / DN40
					Ø125 / DN 50	
ECJ-140	150	110	82	49	Ø125 / DN 50	Ø140 / DN50
					Ø140 / DN65	
ECJ-160	170	120	96	54	Ø140 / DN65	Ø160 / DN65
					Ø160 / DN 80	
ECJ-200	209	140	122	59	Ø160 / DN 80	Ø200 / DN80
					Ø200 / DN 100	
ECJ-225	234	180	146	78	Ø200 / DN 100	Ø225 / DN100
					Ø225 / DN125	
ECJ-250	260	195	182	88	Ø225 / DN125	Ø250 / DN125
					Ø250 / DN150	
ECJ-315	328	240	238	140	Ø315/ DN200	Ø315 / DN150
ECJ-400	415	308	287	158	Ø400 / DN250	Ø400 / DN200
ECJ-450	465	392	334	220	Ø450 / DN300	Ø3450 / DN250
ECJ-500	515	445	372	275	Ø500 / DN350	Ø500 / DN300
ECJ-560	575	480	416	325	Ø520 / DN 400	Ø520 / DN 350
					Ø560 / DN 400	Ø560 / DN 350
ECJ-630	645	550	470	356	Ø630 / DN 450	Ø630 / DN 400

Heat shrinkable end caps ECJ, ECZ

ECZ – Heat shrinkable single dedicated for valves

Heat shrinkable ECZ end caps are perfectly suitable for installation on preinsulated pipe service valves in order to prevent against water and moist penetration, additionally protecting against gas exchange between air and PUR insulation. Special and unique product shape guarantees very fast and easy installation of the end cap on the dedicated service valves.



Product name	D (mm)		d (mm)	L (mm)	Applied on service valves
	max	min			
ECZ – 110/25	118	85	56	87	DN 25
ECZ – 110/32	118	85	62	94	DN 32
ECZ – 125/40	133	95	82	122	DN 40
ECZ – 140/50	150	100	96	134	DN 50

End caps material characteristics

Requirement	Unit	Typical value
Working temperature	°C	- 50 + 125
Shrink temperature	°C	120 - 180
Elongation at rapture	%	300
Resistance to elongation	MPa	13
Hardness, min	Shore D	40
UV resistance		resistant
Acid resistance		resistant
Fungus, mould resistance		resistant
Water absorption	weight %	0,1