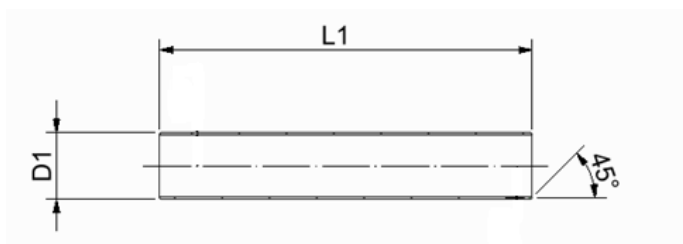


### Double expanded casing joint / Straight reduction L=700mm, packed in foil

#### 1. Product application

Belmaflex Double expanded casing joints / Straight reductions are designed to create a perfect and strong joint in the connection areas of the two preinsulated pipes. Each of the product has been double expanded which makes it possible to shrink it on two different dimensions of preinsulated casing pipes.

#### 2. Product parameters



casing pipe outside diam [mm]	item no	L1 [mm]	min inside diameter before shrinking [mm]	minimal WT* [mm]
90 / 110	3109011007015	700 ±10	125	4,0
110 / 125	3111012507015	700 ±10	140	4,0
125 / 140	3112514007015	700 ±10	155	4,1
140 / 160	3114016007015	700 ±10	176	4,2
160 / 180	3116018007015	700 ±10	197	4,2
180 / 200	3118020007015	700 ±10	217	4,2
200 / 225	3120022507015	700 ±10	243	4,6
225 / 250	3122525007015	700 ±10	269	4,6
250 / 280	3125028007015	700 ±10	299	5,0
280 / 315	3128031507012	700 ±10	336	4,4
315 / 355	3131535507012	700 ±10	378	4,9
355 / 400	3135540007012	700 ±10	420	5,6
400 / 450	3140045007012	700 ±10	470	6,3
450 / 500	3145050007012	700 ±10	520	7,0
500 / 560	3150056007012	700 ±10	581	7,8
560 / 630	3156063007012	700 ±10	659	8,8
630 / 710	3163071007012	700 ±10	738	9,8

\*WT concern raw PE pipe material thicknesses before expansion / downsizing

- ❖ Belmaflex Double expanded casing joints / Straight reductions can be supplied in other lengths on customer request
- ❖ In case of a need for a specific product please contact our sales department

### Double expanded casing joint / Straight reduction L=700mm, packed in foil

#### 3. Material

High density polyethylene (material classification PE100)

#### 4. Marking

White identification label placed in the middle of the joint with information about the product parameters and production date.

#### 5. Packing

According to the agreement with the customer products can be additionally supplied with below accessories:

- mastic (integrated or loose)
- shrink collars (TPSM)
- welding and venting plugs

#### 6. Transport

General transport conditions apply as follow:

- Transport on a pallets
- The pallet should be wrapped with protective plastic foil in order to protect against dust, dirt and damage
- Protect the cargo against sunlight,
- Protect the cargo against rainfall/snowfall
- Pallets should be protected against falling and movement during transportation

#### 7. Storage

General storage conditions apply as follow:

- store indoors or under cover,
- store in vertical position on a flat surface,
- protect against the possibility of damaging of products protective plastic foil
- protect from sunlight
- protect against rainfall/snowfall.
- in order to not activate the shrinking process (from 50°C) store in maximal temperatures not higher than 40 ° C

Belmaflex is not responsible for product damages caused by inappropriate storage.